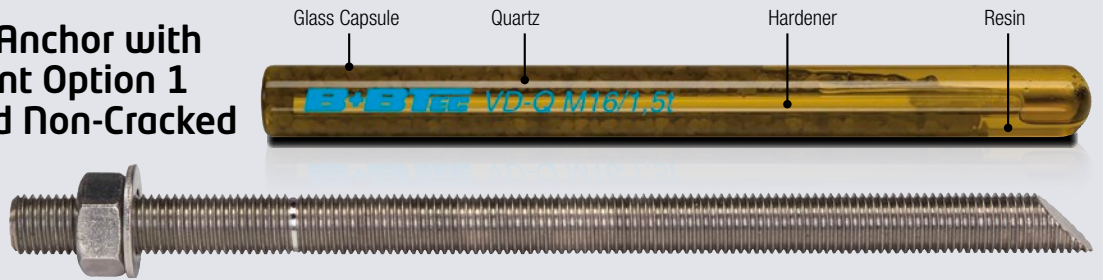


## Glass Capsule Anchor with ETA Assessment Option 1 for Cracked and Non-Cracked Concrete



### Anchor Components

#### Glass Capsule Anchor VDP-Quartz M12/1,5t - M24/1,5t

- Glass capsule containing Quartz Aggregate, Hardener and Resin.
- Components are mixed by driving in Anchor Rod.

#### Anchor Rods ASTA M12/1,5t - M24/1,5t

- Steel 5.8 and 8.8 Zinc Plated and Hot Dip Galvanized
- Stainless Steel A4-70 and A4-80
- High Corrosion Resistant Steel 1.4529

## Features

- ETA Option 1 for Cracked and Non-Cracked Concrete
- High Load Bearing Capacity
- Simplified Cleaning Procedures
- Easy Installation
- Fast Curing
- F120 Fire Rating
- VOC Assessment A+
- Absolutely NO Chemical or Plastic Waste, just a cardboard box, ready to be recycled.
- B+BTec DesigFix® Support

## Use Conditions

- Installation Hammer/Air and Diamond drilled holes.
- Static and quasi static loading, in non-cracked concrete M12 - M24
- Static and quasi static loading, in cracked concrete M12 - M24
- Installation in dry, wet or flooded bore holes
- Min. Installation Temperature: Mortar +5°C, Concrete -20°C
- Installation in Concrete C20/25 to C50/60 according to EN 206-1:2000-12
- Overhead installations are permitted

## Approvals & Test Reports



## Temperature Range

B+BTec VDP-Quartz Glass Capsule Anchors may be applied in the temperature ranges given below. An elevated base material temperature leads to a reduction of the bond resistance.

**Max. long term base material temperature:** Long term elevated base material temperatures are roughly constant over significant periods of time.

**Max. short term base material temperature:** Short term elevated base material temperatures are those that occur over brief intervals, e.g. as a result of diurnal cycling.

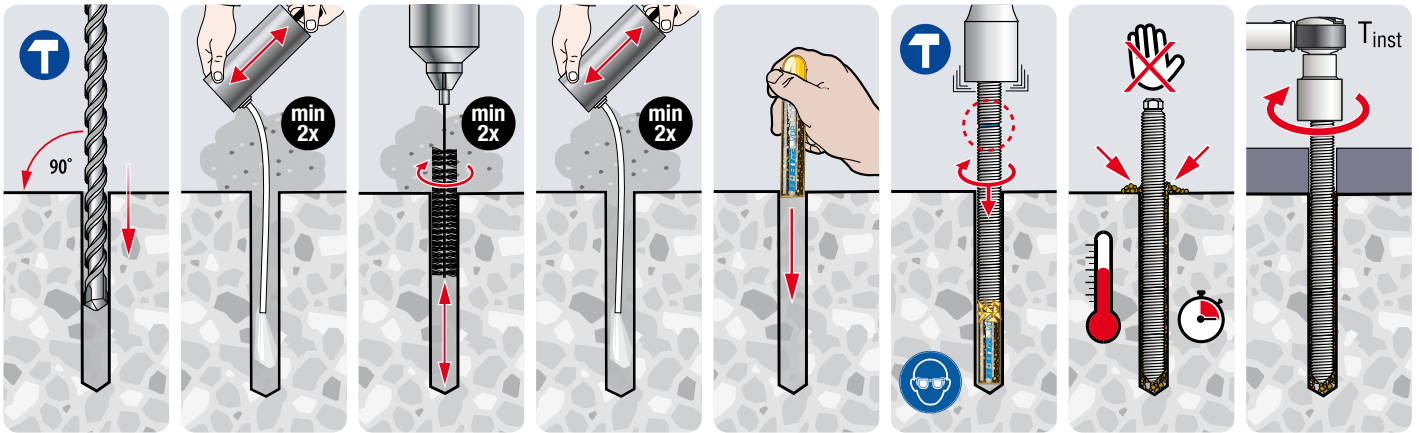
Temperature Range	Temperature Base Material	Max. Long Term Base Material Temp.	Max. Short Term Base Material Temp.
Temp. Range I	-40°C to +40°C	+ 24°C	+40°C
Temp. Range II	-40°C to +80°C	+50°C	+80°C



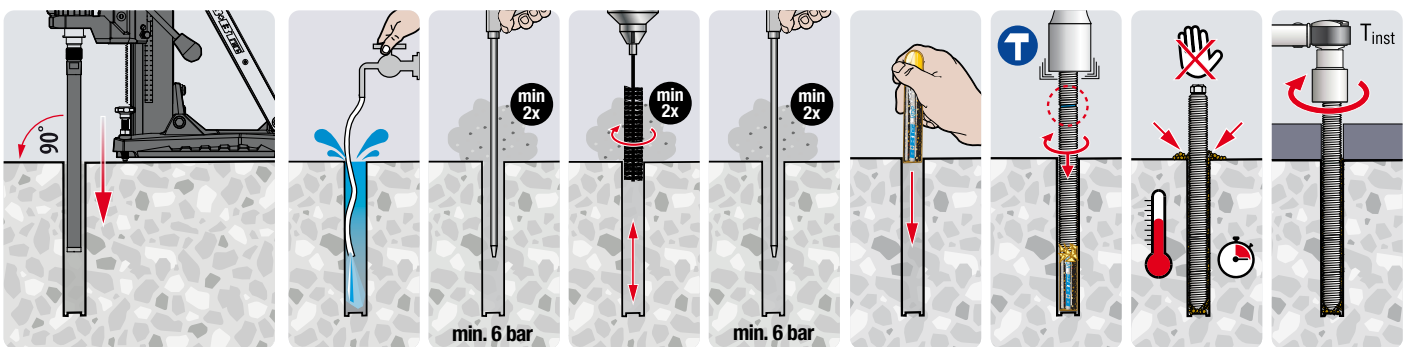
## Glass Capsule Anchors & the Environment

Because the total volume of these Glass Capsules is engineered to completely fill the Anchor Bore Hole, absolutely **NO CHEMICAL OR PLASTIC WASTE** remains after installation. All that is left is a cardboard box ready to be recycled.

## Installation Procedures Hammer/Air Drilled Holes



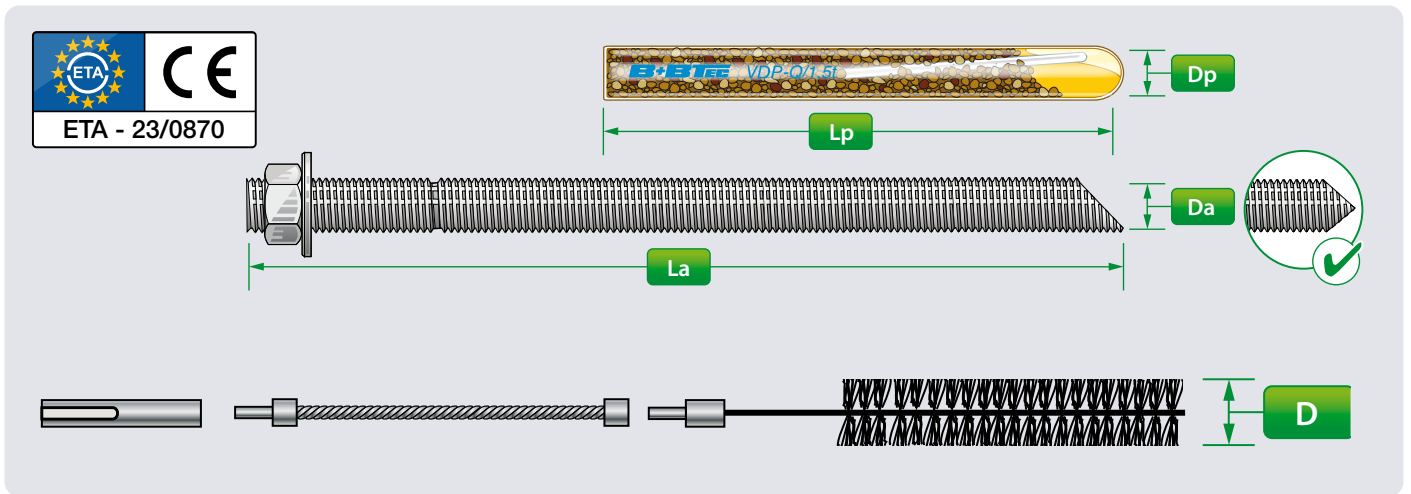
## Installation Procedures Diamond Drilled Holes



## Minimum Curing Times

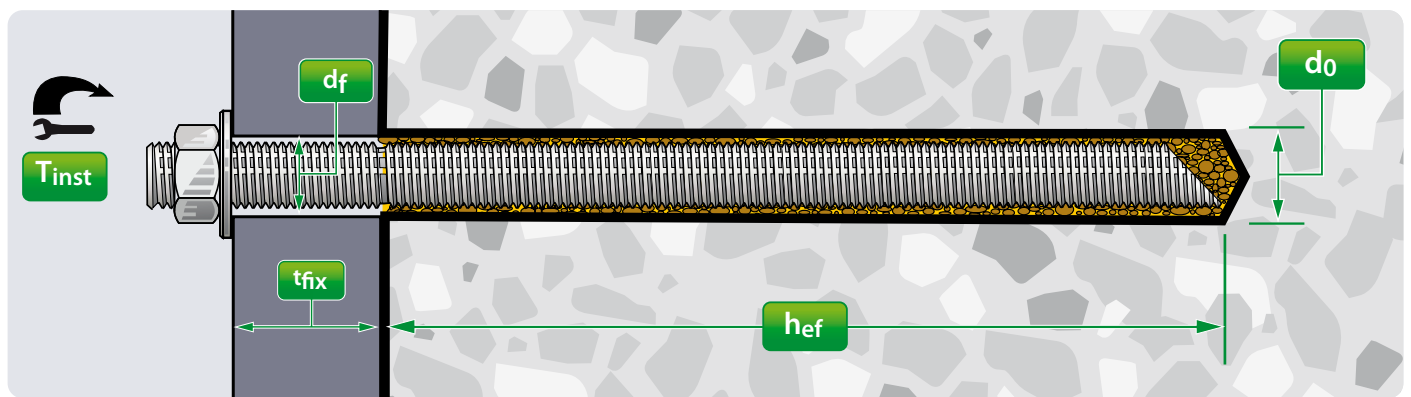
Temperature <sup>1)</sup>	°C	≥ -20	≥ -10	≥ +0	≥ +5	≥ +20	≥ +30
Min. Curing Time Dry Holes		30 h	10 h	5 h	1 h	20 min	10 min
Min. Curing Time Wet Holes		60 h	20 h	10 h	2 h	40 min	20 min

1) Concrete Temperature



## Product Dimensions

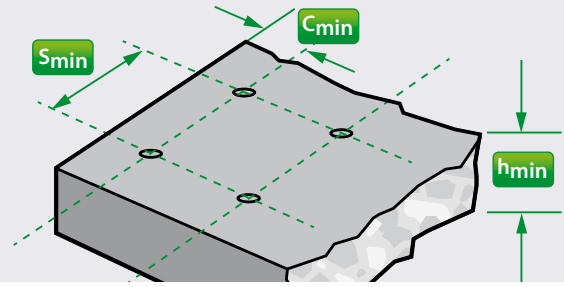
Anchor Size	$D_a$		M12/1,5t	M16/1,5t	M20/1,5t	M24/1,5t
Rod Length	$L_a$	[mm]	210	250	325	400
Capsule Type	<b>VDP-Q</b>	--	M12/1,5t	M16/1,5t	M20/1,5t	M24/1,5t
Capsule Diameter	$D_p$	[mm]	13	17	17	22
Capsule Length	$L_p$	[mm]	125	125	255	245
Capsule Volume	$V_p$	[cc]	12,6	22,3	46,0	76,2
Required Volume per cm Embedment Depth	$V_s$	[cc/cm]	0,75	1,09	1,52	2,01
Brush Diameter	$D$	[mm]	16	20	24	28
Min. Brush Diameter	$D_{min}$	[mm]	14,5	18,5	18,5	26,5



## Installation Dimensions

Anchor Size	$D_a$		M12/1,5t	M16/1,5t	M20/1,5t	M24/1,5t
Hole Diameter	$d_o$	[mm]	14	18	22	26
Embedment Depth	$h_0=hef$	[mm]	165	190	255	315
Diameter Fixture Hole	$d_f$	[mm]	14	18	22	26
Fixture Thickness	$t_{fix} \leq$	[mm]	30	40	50	60
Recommended Torque	$T_{inst}$	[Nm]	40	80	120	180

## Member Thickness, Edge Distance & Spacing



Anchor Size	$D_a$		M12/1,5t	M16/1,5t	M20/1,5t	M24/1,5t
Min. Member Thickness	<b>h<sub>min</sub></b>	[mm]	195	225	300	370
Min. Edge Distance	<b>C<sub>min</sub></b>	[mm]	55	65	85	105
Min. Spacing	<b>S<sub>min</sub></b>	[mm]	55	65	85	105

## Performance Data<sup>1)</sup> Hammer/Air Drilled Holes

### Design Resistance

Steel Failure

Non-Cracked Concrete		$D_a$		M12/1,5t	M16/1,5t	M20/1,5t	M24/1,5t
Steel 5.8	Tensile	<b>N<sub>Rd</sub></b>	[kN]	28,0	52,0	82,0	118,0
	Shear <sup>2)</sup>	<b>V<sub>Rd</sub></b>	[kN]	16,8	31,2	48,8	70,4
Steel 8.8	Tensile	<b>N<sub>Rd</sub></b>	[kN]	41,5	63,7	101,5	150,4
	Shear <sup>2)</sup>	<b>V<sub>Rd</sub></b>	[kN]	27,2	50,4	78,4	112,8
A4-70	Tensile	<b>N<sub>Rd</sub></b>	[kN]	31,6	58,8	92,0	132,1
	Shear <sup>2)</sup>	<b>V<sub>Rd</sub></b>	[kN]	19,2	35,3	55,1	79,5
A4-80	Tensile	<b>N<sub>Rd</sub></b>	[kN]	41,5	63,7	101,5	150,4
	Shear <sup>2)</sup>	<b>V<sub>Rd</sub></b>	[kN]	25,6	47,4	73,7	106,0

Cracked Concrete		$D_a$		M12/1,5t	M16/1,5t	M20/1,5t	M24/1,5t
Steel 5.8	Tensile	<b>N<sub>Rd</sub></b>	[kN]	20,7	31,8	64,1	102,9
	Shear <sup>2)</sup>	<b>V<sub>Rd</sub></b>	[kN]	16,8	31,2	48,8	70,4
Steel 8.8	Tensile	<b>N<sub>Rd</sub></b>	[kN]	20,7	31,8	64,1	102,9
	Shear <sup>2)</sup>	<b>V<sub>Rd</sub></b>	[kN]	27,2	50,4	78,4	112,8
A4-70	Tensile	<b>N<sub>Rd</sub></b>	[kN]	20,7	31,8	64,1	102,9
	Shear <sup>2)</sup>	<b>V<sub>Rd</sub></b>	[kN]	19,2	35,3	55,1	79,5
A4-80	Tensile	<b>N<sub>Rd</sub></b>	[kN]	20,7	31,8	64,1	102,9
	Shear <sup>2)</sup>	<b>V<sub>Rd</sub></b>	[kN]	25,6	47,4	73,7	106,0

## Recommended Loads<sup>3)</sup>

Steel Failure

Non-Cracked Concrete		D <sub>a</sub>		M12/1,5t	M16/1,5t	M20/1,5t	M24/1,5t
Steel 5.8	Tensile	<b>N<sub>rec</sub></b>	[kN]	20,0	37,1	58,6	84,3
	Shear <sup>2)</sup>	<b>V<sub>rec</sub></b>	[kN]	12,0	22,3	34,9	50,3
Steel 8.8	Tensile	<b>N<sub>rec</sub></b>	[kN]	29,6	45,5	72,5	107,4
	Shear <sup>2)</sup>	<b>V<sub>rec</sub></b>	[kN]	19,4	36,0	56,0	80,6
A4-70	Tensile	<b>N<sub>rec</sub></b>	[kN]	22,6	42,0	65,7	94,4
	Shear <sup>2)</sup>	<b>V<sub>rec</sub></b>	[kN]	13,7	25,2	39,4	56,8
A4-80	Tensile	<b>N<sub>rec</sub></b>	[kN]	29,6	45,5	72,5	107,4
	Shear <sup>2)</sup>	<b>V<sub>rec</sub></b>	[kN]	18,3	33,9	52,6	75,7

Cracked Concrete		D <sub>a</sub>		M12/1,5t	M16/1,5t	M20/1,5t	M24/1,5t
Steel 5.8	Tensile	<b>N<sub>rec</sub></b>	[kN]	14,8	22,7	45,8	73,5
	Shear <sup>2)</sup>	<b>V<sub>rec</sub></b>	[kN]	12,0	22,3	34,9	50,3
Steel 8.8	Tensile	<b>N<sub>rec</sub></b>	[kN]	14,8	22,7	45,8	73,5
	Shear <sup>2)</sup>	<b>V<sub>rec</sub></b>	[kN]	19,4	36,0	56,0	80,6
A4-70	Tensile	<b>N<sub>rec</sub></b>	[kN]	14,8	22,7	45,8	73,5
	Shear <sup>2)</sup>	<b>V<sub>rec</sub></b>	[kN]	13,7	25,2	39,4	56,8
A4-80	Tensile	<b>N<sub>rec</sub></b>	[kN]	14,8	22,7	45,8	73,5
	Shear <sup>2)</sup>	<b>V<sub>rec</sub></b>	[kN]	18,3	33,9	52,6	75,7

1) All Loads in kN for a Single anchor in Dry/Wet, Non-Cracked Concrete C20/25 without edge or spacing influences. Temperature Range 50°C/80°C for long/short term.

2) Steel strength in kN without bending moment.

3) Incl. Safety factor  $\gamma_G = 1,4$

## Performance Data<sup>1)</sup> Diamond Drilled Holes

### Design Resistance

Steel Failure

Non-Cracked Concrete		D <sub>0</sub>		M12/1,5t	M16/1,5t	M20/1,5t	M24/1,5t
Steel 5.8	Tensile	<b>N<sub>Rd</sub></b>	[kN]	20,0	37,1	58,6	84,3
	Shear <sup>2)</sup>	<b>V<sub>Rd</sub></b>	[kN]	12,0	22,3	34,9	50,3
Steel 8.8	Tensile	<b>N<sub>Rd</sub></b>	[kN]	29,6	45,5	72,5	107,4
	Shear <sup>2)</sup>	<b>V<sub>Rd</sub></b>	[kN]	19,4	36,0	56,0	80,6
A4-70	Tensile	<b>N<sub>Rd</sub></b>	[kN]	22,6	42,0	65,7	94,4
	Shear <sup>2)</sup>	<b>V<sub>Rd</sub></b>	[kN]	13,7	25,2	39,4	56,8
A4-80	Tensile	<b>N<sub>Rd</sub></b>	[kN]	29,6	45,5	72,5	107,4
	Shear <sup>2)</sup>	<b>V<sub>Rd</sub></b>	[kN]	18,3	33,9	52,6	75,7

Cracked Concrete		D <sub>0</sub>		M12/1,5t	M16/1,5t	M20/1,5t	M24/1,5t
Steel 5.8	Tensile	<b>N<sub>Rd</sub></b>	[kN]	22,8	38,2	64,1	95
	Shear <sup>2)</sup>	<b>V<sub>Rd</sub></b>	[kN]	16,8	31,2	48,8	70,4
Steel 8.8	Tensile	<b>N<sub>Rd</sub></b>	[kN]	22,8	38,2	64,1	95
	Shear <sup>2)</sup>	<b>V<sub>Rd</sub></b>	[kN]	27,2	50,4	78,4	112,8
A4-70	Tensile	<b>N<sub>Rd</sub></b>	[kN]	22,8	38,2	64,1	95
	Shear <sup>2)</sup>	<b>V<sub>Rd</sub></b>	[kN]	19,2	35,3	55,1	79,5
A4-80	Tensile	<b>N<sub>Rd</sub></b>	[kN]	22,8	38,2	64,1	95
	Shear <sup>2)</sup>	<b>V<sub>Rd</sub></b>	[kN]	25,6	47,4	73,7	106,0

## Recommended Loads<sup>3)</sup>

Steel Failure

Non-Cracked Concrete		D <sub>a</sub>		M12/1,5t	M16/1,5t	M20/1,5t	M24/1,5t
Steel 5.8	Tensile	<b>N<sub>rec</sub></b>	[kN]	20,0	37,1	58,6	84,3
	Shear <sup>2)</sup>	<b>V<sub>rec</sub></b>	[kN]	12,0	22,3	34,9	50,3
Steel 8.8	Tensile	<b>N<sub>rec</sub></b>	[kN]	29,6	45,5	72,5	107,4
	Shear <sup>2)</sup>	<b>V<sub>rec</sub></b>	[kN]	19,4	36,0	56,0	80,6
A4-70	Tensile	<b>N<sub>rec</sub></b>	[kN]	22,6	42,0	65,7	94,4
	Shear <sup>2)</sup>	<b>V<sub>rec</sub></b>	[kN]	13,7	25,2	39,4	56,8
A4-80	Tensile	<b>N<sub>rec</sub></b>	[kN]	29,6	45,5	72,5	107,4
	Shear <sup>2)</sup>	<b>V<sub>rec</sub></b>	[kN]	18,3	33,9	52,6	75,7

Cracked Concrete		D <sub>a</sub>		M12/1,5t	M16/1,5t	M20/1,5t	M24/1,5t
Steel 5.8	Tensile	<b>N<sub>rec</sub></b>	[kN]	16,3	27,3	45,8	67,9
	Shear <sup>2)</sup>	<b>V<sub>rec</sub></b>	[kN]	12,0	22,3	34,9	50,3
Steel 8.8	Tensile	<b>N<sub>rec</sub></b>	[kN]	16,3	27,3	45,8	67,9
	Shear <sup>2)</sup>	<b>V<sub>rec</sub></b>	[kN]	19,4	36,0	56,0	80,6
A4-70	Tensile	<b>N<sub>rec</sub></b>	[kN]	16,3	27,3	45,8	67,9
	Shear <sup>2)</sup>	<b>V<sub>rec</sub></b>	[kN]	13,7	25,2	39,4	56,8
A4-80	Tensile	<b>N<sub>rec</sub></b>	[kN]	16,3	27,3	45,8	67,9
	Shear <sup>2)</sup>	<b>V<sub>rec</sub></b>	[kN]	18,3	33,9	52,6	75,7

1) All Loads in kN for a Single anchor in Dry/Wet, Non-Cracked Concrete C20/25 without edge or spacing influences. Temperature Range 50°C/80°C for long/short term.

2) Steel strength in kN without bending moment.

3) Incl. Safety factor γ<sub>G</sub> = 1,4

# Free Anchor Design Software for Structural Safety!



## B+BTEC DesignFIX® Anchor Design made Easy!

### Input Freedom & 3D User Interface

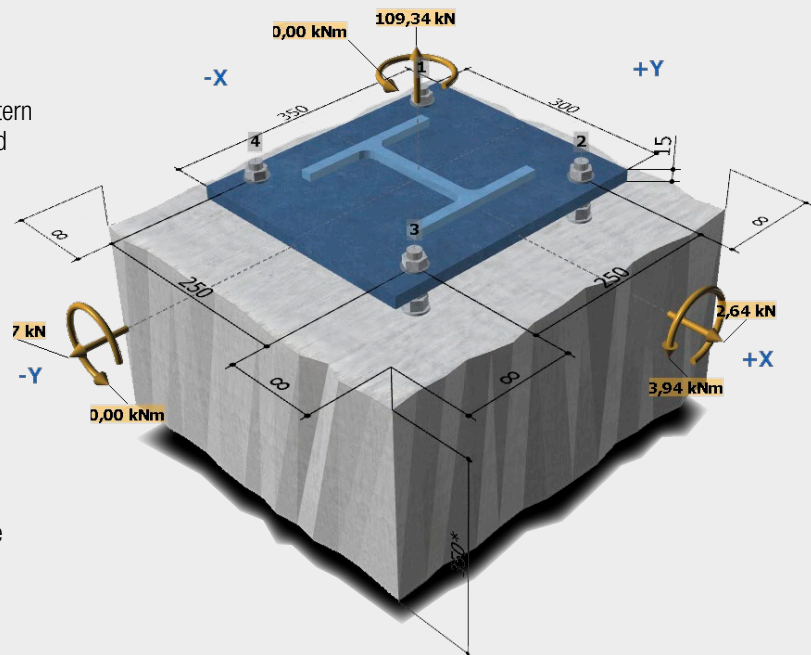
**B+BTEC DesignFIX®** offers complete freedom to select an anchor pattern and base plate configuration, as well as the position and direction of load combinations. Changes are made directly into the 3D user interface.

### Anchor Type Comparison

**B+BTEC DesignFIX®** displays the usability of the various anchor types (according to European directive ETAG 001 and EN 1992-4), including the values for static loads and under seismic influence. This allows you to compare the calculation results of the different anchor types in a single easy to read panel.

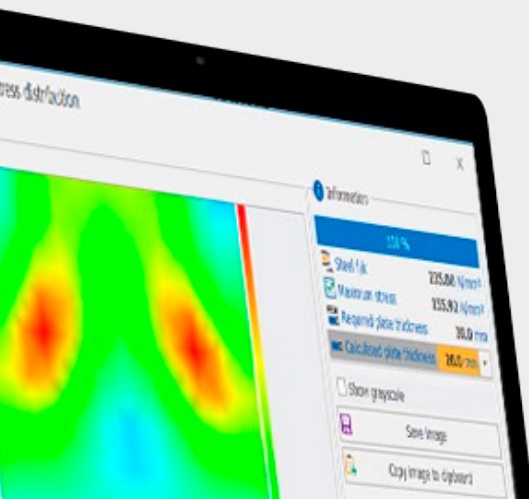
### Calculation Effective Anchorage Depth

When selecting an Injection Mortar **B+BTEC DesignFIX®** allows for the automatic calculation of the most effective anchorage depth, taking in consideration the minimal and maximum values of the ETA.



### Calculation Base Plate Thickness

The integrated FEM-Calculation Method (Finite Element Method) in **B+BTEC DesignFIX®** allows you to calculate the base plate thickness based upon the stresses in the base plate in combination with the base plate configuration.



Get your Free Download Link on [bbtectoools.com](http://bbtectoools.com)



Munterij 8 • 4762 AH Zevenbergen • The Netherlands  
T: +31 - 168 331 260 • E: [info@bbtectoools.com](mailto:info@bbtectoools.com)  
• [bbtectoools.com](http://bbtectoools.com)